

 **SHEMSS** HOME IS ART

ORDER HERE & BUILD ANYWHERE
DESIGNER HOMES SOLUTION,
ARCHITECTURAL PLANS, AND BUILDING
MATERIAL DELIVERY COMPANY.



SHIMIZU 6.0

SHEMSS HOME IS ART



4 BED 3 BATH 2 CAR GARAGE 2700 SQ. FEET.

Shimizu 6.0 will invite you in with its modern exterior to its spacious interior. It has cedar lap siding, metal accents, concrete accent walls, and a see-through fireplace that you can enjoy from inside and outside giving you a modern-rustic appeal. Shimizu is the perfect home for entertaining and bringing groups together. You'll fall in love with the open concept living, complete with easy fold doors to invite the space from your living area to your outdoor area. The interior is crafted with the highest quality materials. The one bed, one bath ADU unit above the garage creates a much-desired separate space for a studio or guests. The garage comfortably fits two cars with ample space to store adventuring gear. Come home and relax in Shimizu.

66x49 Building Area

DETAILS INCLUDED IN PREMIUM PACKAGE

FLOORPLAN & DESIGN DRAWINGS

Title Sheet

Project information: detail analysis of conditioned and unconditioned space sizes add proposed building coverage. Construction type, general notes.

Floor Plan

Scaled, detailed plan of the house. The fully dimensioned floor plan will show room sizes and designations, fixtures count and location, window/door sizes. If applicable, exterior porches, decks, patios will be shown. General notes, legends, and framing schedule. Proposed shear walls to be confirmed by EOR.

Elevations

Scaled views of the house exterior. The following sheet will indicate finished floor elevations, ceiling heights, top of windows elevations, roof slope, exterior finishes, and general notes.

Foundation Plan

Scaled foundation plan will indicate perimeter footing, slab-on-grade, spread footings, piers as pertinent to house design. Footing schedule, general foundation notes, legends. Foundation sizes to be confirmed EOR.

Floor Framing Plan

Scaled floor framing plan will include floor joist sizes, spacing, and spans. Floor girder's location, sizes, and spacing. The lower-level floor framing plan will be superimposed with the foundation plan for clarity. All framing sizes are to be confirmed by EOR.

Roof Plan

Scaled roof plan will show roof shape, valleys, hips, ridges, overhangs as applicable to the house. Standard 24" on-center truss spacing will be shown, to be confirmed by EOR.

Sections

Scaled building cross sections for both transverse and longitudinal direction showing plate heights, proposed insulation location, foundation, finished grades, and other framing components. To be confirmed by EOR for local jurisdiction compliance.

Mechanical Plan

Proposed gas diagram with rise and run information, to be confirmed by plumbing/mechanical contractor to comply with local jurisdiction. Proposed hose bibs, exterior outlets, and mechanical equipment location as applicable. General notes, legends, schedules.

Electrical Plan

Electrical light fixture's location and types and corresponding switches. Smoke and carbon monoxide detectors, outlets. General notes, legends, schedules.

STRUCTURAL BUILDING MATERIAL

Material List

Shows the quantity, dimensions, and specifications for the major materials needed to build your home. You will get faster, more accurate bids while avoiding having to pay for unused materials and waste. Material lists are available for all model plans (except as otherwise indicated), but only accessible with the purchase of floorplan & design drawings.

EXTERIOR & INTERIOR DESIGN PACKAGE

References to links may be broken due to updates or other vendor website modifications, SHEMSS Design Sheet cannot and does not guarantee or control third-party vendor product links or websites to work indefinitely. Similarly, just as links can be broken, so can the actual product be discontinued. SHEMSS Design Sheet cannot and does not guarantee or control third-party vendor production, manufacturing, or product availability to be on the market. Links and products are referenced at the time of the design. In cases that the link is broken, try a wider search by product name and description.

Design Sheet Example:



22 SHEMSS DESIGNER HOME MODEL PALOMA



DRIVEWAY DRAIN SYSTEM | qty 06
GALVANIZED STEEL SLOT DRAIN SYSTEM

PRODUCT LINKS
https://www.hardhatpark-us.com/products/galvanized-steel-slot-drain-system?utm_source=designsheet



HANDRAIL | qty 01
AIR ALUMINUM WALL HANDRAIL W/ MOUNTS

PRODUCT LINKS
<https://www.aluminumhandrail.net.com/products/air-aluminum-wall-handrail>



SHEMSS INTERIOR FINISHES



PAPER HOLDER | qty 01
MATTE BLACK TOILET PAPER HOLDER, APLUSEE STAINLESS STEEL, HALF OPEN ROUND TISSUE ROLL HANGER, BATHROOM KITCHEN STORAGE

PRODUCT LINKS
https://www.amazon.com/gp/product/B07R6BPF3H/ref=asc_inf

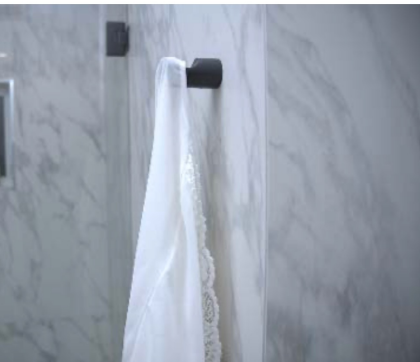


FAUCET | qty 01
LOVEDIMA SOLID BRASS MODERN WALL-MOUNT BATHROOM SINK FAUCET WITH SINGLE HANDLE IN BLACK FINISH

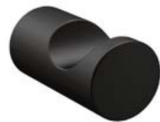
PRODUCT LINKS
https://www.amazon.com/gp/product/B07R1XKFF4/ref=asc_inf



SHEMSS INTERIOR FINISHES



124 SHEMSS DESIGNER HOME MODEL PALOMA



ROBE HOOK | qty 03
MOEN Y80408BL ALIGN MODERN SINGLE ROBE HOOK, MATTE BLACK

PRODUCT LINKS
https://www.amazon.com/gp/product/B081928W18?ref=asc_inf



SINK DRAIN | qty 01
NEARMOON BATHROOM POP UP DRAIN, BRASS SINK DRAIN STRAINER FOR BATHROOM ASSEMBLY STOPPER VESSEL SINK, ANTI-CLOGGING (WITHOUT OVERFLOW, MATTE BLACK)

PRODUCT LINKS
<https://www.amazon.com/NeerMoon-Bathroom-Strainer-Assembly-Anti-Clogging>



ITEMS NOT INCLUDED & RESPONSIBILITY

THE CUSTOMER UNDERSTANDS THAT ADDITIONAL LISTED ENGINEERING MAY BE REQUIRED BASED ON YOUR SPECIFIC AREA.

1. Wind | Hurricane | Tornado
2. Seismic | Earthquake
3. Heavy Snow
4. Flood potential
5. Soil instability

These items are NOT included:

Architectural or Engineering Stamp - handled locally.

The customer understands that HVAC, & Plumbing will not be included in plans (other than the location of plumbing fixtures and electrical lights, plugs & switches)

Energy calculations - Handled locally when required.

Your responsibility:

Determining and complying with all applicable codes is your responsibility.

Manufacturer instructions should be followed for all materials, appliances, and systems. Consult a local mechanical contractor for systems suitable for local climate conditions if required.

We recommend contacting your local building department to find out the requirements specific to your area because of the great differences in geography and climate, each state, or municipality may have its own building regulations.

Site Plan - Handled locally when required.

Your subcontractors will handle - Mechanical Drawings (location of heating and air equipment and ductwork)

Your subcontractors will handle - Plumbing Drawings (drawings showing the actual plumbing pipe sizes and locations).

UNDERSTAND THAT THE MATERIALS LISTED BELOW ARE NOT INCLUDED IN THE PACKAGES:

Foundation, Stone Masonry, Finished Stairs, Waterproofing, Roof Finishes, Gypsum wallboard, Tile, Paint + Coatings (Interior & Exterior), Fireplace, Security + Fire Protection Systems, Appliances, HVAC, Baseboards.

Selling designer home plans online.

We offer 3 packages at a fixed contract — Elite, Premium, and Classic. Simply choose from one of our three packages and consolidate every step into one delivery. SHEMASS Homes, Inc. Designer homes solution, Architectural plans, and Building material delivery company.



SHEMASS Homes Inc.

1034 Emerald Bay Rd #444 South Lake Tahoe, CA 96150 USA.
Copyright © 2022 SHEMASS Homes inc. All rights reserved.
Contact: 888-960-5263 info@shemsshomes.com